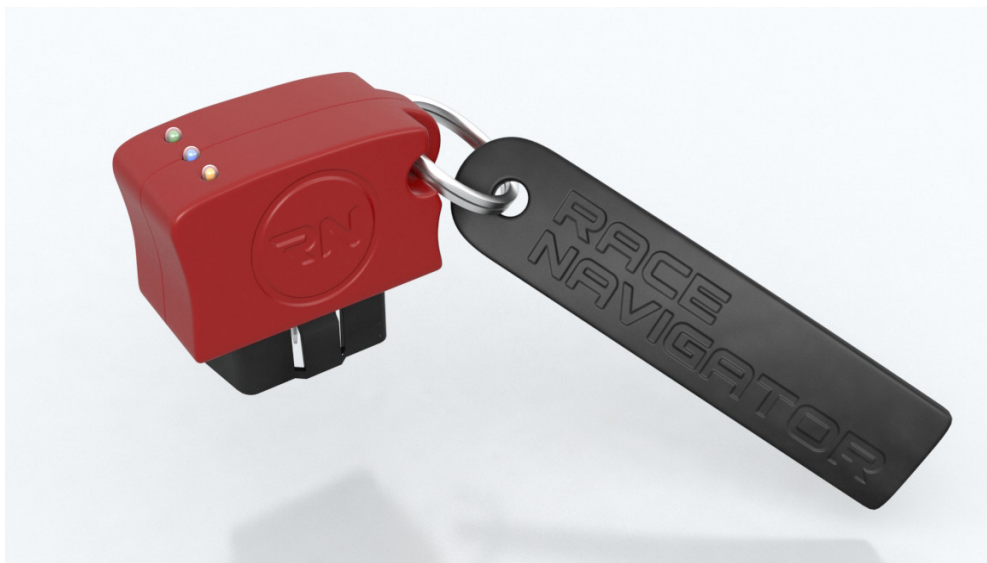


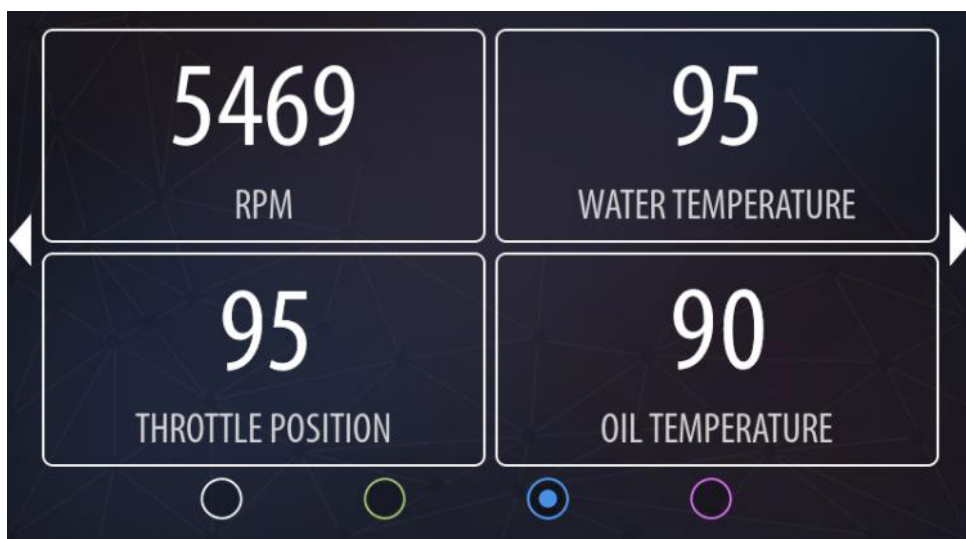
QUICK START GUIDE - OBD PLUG

Connection and use of the OBD PLUG



Plug the **RN OBD PLUG** into the OBD-II diagnostic port in your vehicle (it is usually located in the driver footwell, under the steering wheel, on the left side).

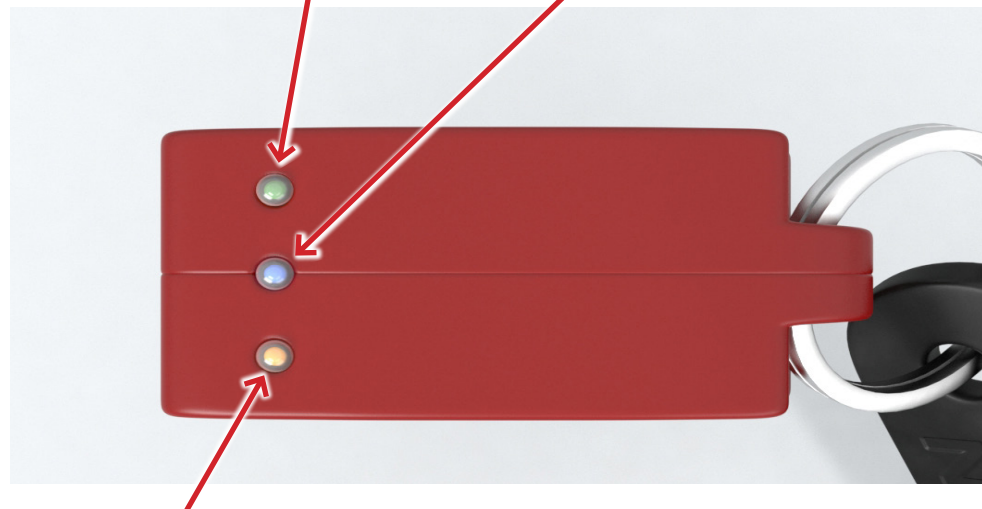
The OBD-II data is collected from the car while recording. The data can be shown at the RN Dashboard.



You will find **3 diodes** on the RN OBD PLUG:

Green: 12V power supply (shining constantly)

Blue: Bluetooth connection between Plug and RN (shining constantly)



Yellow/Orange: OBD data is recognized from the Plug (when engine is running)

To verify whether the RN PLUG connection is working fine with your car follow the points from below:

- Connect the RN PLUG to your car,
- Turn on the engine,
- Turn on the RN device and go to HOME SCREEN -> DASHBOARD -> 3rd PANEL (3rd dot),
- The Race Navigator will start connecting to the RN PLUG,
- Please wait on this panel till the moment when OBD values are visible, first connection can take few minutes.

Trouble Shooting

If no OBD data is visible on Panel 3 of the Dashboard, please check the diodes of the RN OBD PLUG. If one diode is not lit, please disconnect the Plug connect it again to the OBD-II diagnostic port.

Contact us: www.race-navigator.com, www.rn-support.com, support@rn-vision.com
+49 2161 / 63 970 11